

NEIGHBORHOOD

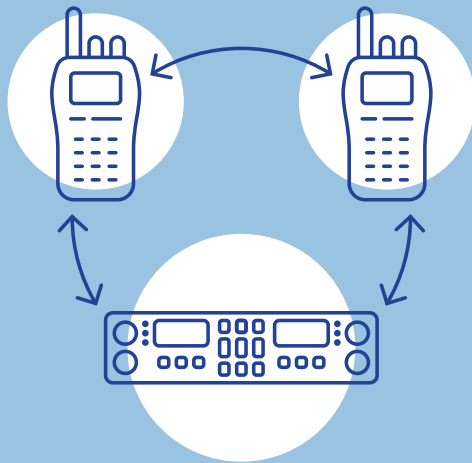
RADIO SAFETY NETWORK

"SAFETY NETS"

WE LOOK OUT FOR EACH OTHER

Using GMRS radios

No exam or testing required



Donations appreciated for

building this program

Checks to:

Trinity County Amateur Radio Club / NRSN

PO Box 2283, Weaverville, CA 96093

Neighborhood Radio Safety Network

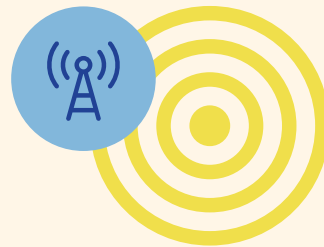
WHEN ALL ELSE FAILS

USE THE NEIGHBORHOOD

RADIO SAFETY NETWORK

The program is not a replacement for landlines, cell phones, or Internet contact.

The program offers a backup solution to communicate... When All Else Fails



Sponsored by
**TRINITY COUNTY AMATEUR
RADIO CLUB**

TCARC
PO Box 2283, Weaverville, CA 96093

TCARC membership information
Email: trinityhams73@gmail.com

NRSN questions and information
Email Karl Fisher: KJ6OCL@gmail.com
Phone: 916.715.5850

Thank you to the El Dorado County Amateur Radio Club for their help and support in starting a GMRS program in Trinity County.

We Look Out For Each Other



RADIO

SAFETY NETS

Help your community stay in touch

Practice radio communications
before a disaster strikes!

Neighborhood Radio Safety Network



WHAT ARE RADIO SAFETY NETS?

Safety Nets are a regular, on-the-air, radio meeting place where residents can check in each week to learn and practice basic radio communications skills **before an emergency or disaster strikes.**

A weekly Radio Safety Net helps you to:

- 1 Check your radio to ensure it's charged up and working
- 2 Learn how to use your radio before you might really need it
- 3 Make sure that the radio communications system itself is working
- 4 Get to know your neighbors
- 5 Let others know that you're OK.

There may also be storm-event or event-watch nets that are activated whenever needed during a storm, an emergency, a fire or any other event or alert such as a power shutdown, and especially when normal communications are impaired or disrupted.

AN EXAMPLE RADIO SAFETY NET OUTLINE

Each week, someone volunteers to be the weekly “Net Control,” or “Host.” Ideally, there should be several hosts who all take turns managing your nets.

Your local Safety Net starts each week on the same day, and at the same time, usually in the evenings. Your Safety Net is also held on the same channel, usually the repeater channel for your area.

To ensure consistency, your Safety Net host almost always works from a prepared script. There will be time for everyone to talk but please wait for the host to recognize you before pressing your radio's push-to-talk or “PTT” transmit button.

How a Safety Net begins

A typical weekly Safety Net begins with the host briefly introducing themselves and stating the purpose of the net. They then might ask if there are “any emergency or priority announcements.” This is the time for any Safety Net listeners with high-priority announcements to first identify themselves with their name and GMRS call sign, and then wait for the host to acknowledge them (AKA “check in”).

The Safety Net then proceeds with the host reading from an alphabetical list of names of participating community members, allowing a few seconds for each member to transmit and check in after their name is called.

When it's your turn, reply by stating your name, location and GMRS call sign, and then release your PTT button. The host will check you in, and then read the next name on the list.

Once the list is finished, the host may follow up and ask if there are any “late or missed check-ins?” The host might also ask “are there any visitors?” and allow them chance to check in.

From here, your net may proceed with a more general discussion or a question and answer period. You may want to share something from your day or week.

Again, wait for the host to call you. There might be times when you have a comment or answer for another member. Just a quick “Comment” inserted between breaks is usually enough. Again, wait for your host to invite you to speak.

Emergency event watch

A storm-watch or event-watch net operates a little differently. Here, whenever there's an event or emergency in your area, plan on checking in to your main repeater channel at the top of each hour to receive or transmit important information. If your power is off, you may want to turn off your radio between check ins to conserve batteries (always have spare batteries!)

**OF COURSE, IF THERE'S ANY
KIND OF EMERGENCY THAT
NEEDS IMMEDIATE ATTENTION,
DON'T WAIT! CALL 911!**

